

EN

# ILLUMYNA

— TECH





ILLUMYNA  
TECH



LOCKING  
FILLER

200 ml e 6,76 €

sens.us

ILLUMYNA  
TECH



LOCKING  
SHAMPOO

Shampoo adstringente  
a base di acido salicilico  
per capelli grassi  
e tendenti al seborrèo

ERYTHRITOL  
ZANTHOXYLLUM EXTRACT

sens.us

1200 ml e 40,57 €

ILLUMYNA  
TECH



LOCKING  
CONDITIONER

Condizionatore nutriente  
a base di acido salicilico  
per capelli secchi  
e tendenti al seborrèo

ERYTHRITOL  
ZANTHOXYLLUM EXTRACT

sens.us

900 ml e 30,43 €

ILLUMYNA  
TECH



LOCKING  
SPRAY

Spray nutriente  
a base di acido salicilico  
per capelli secchi  
e tendenti al seborrèo

ERYTHRITOL  
ZANTHOXYLLUM EXTRACT

sens.us

200 ml e 6,76 €

LOCKING  
FILLER

LOCKING  
SHAMPOO

LOCKING  
CONDITIONER

LOCKING  
SPRAY

## WHAT IS ILLUMYNA TECH?

The Illumyna Tech line has been created as a technical solution to improve hair protection and to properly complete and finalise technical services with an alkaline pH.

When solutions and services are used for bleaching, colour removal, lightening or waving, particularly when the hair has already been treated or is sensitised, extra care and protection is needed even in the hands of a professional who can properly perform the procedures.

What's more, pH must be rebalanced after this type of service, neutralising and stabilising the hair in order for colours (permanent), oxidative toners (demi-permanent) and direct colours (semi-permanent) to work properly. Without this important step, the colour and the life of the services could be compromised.

## WHAT DOES ILLUMYNA TECH DO?

Thanks to the acidic pH and protective agents in the **Illumyna Tech Locking Filler, Shampoo, Conditioner and Spray**, used in the start<sup>1</sup>, middle<sup>2</sup> or end<sup>3</sup> stages of a technical service, it is possible to:

- Protect and maintain the correct level of hydration for the fibres present in the hair's cortex
- Restore the correct pH level in order to boost permanent and demi-permanent oxidative colours or semi-permanent colours after using bleaches or lighteners
- Provide an excellent finish to the technical services for improved hair management and longer-lasting colours or permanent waving

## HOW IS ILLUMYNA TECH USED?

The Illumyna Tech line consists of 4 items:



**ILLUMYNA TECH  
LOCKING FILLER**

(additive filler for bleaches pH 4.0 – 5.0)

**ILLUMYNA TECH  
LOCKING SHAMPOO**

(acidifying shampoo with pH 3.5 – 4.5)

**ILLUMYNA TECH  
LOCKING CONDITIONER**

(acidifying conditioner with pH 3.0 – 4.0)

**ILLUMYNA TECH  
LOCKING SPRAY**

(acidifying two-phase spray with pH 3.5 – 4.5<sup>4</sup>)

## SERVICES:

- Bleaching/Colour removal (Illumyna Tech Locking Filler)
- Before the neutraliser for the perm service (Illumyna Tech Locking Filler)
- Middle stage between bleaching/colour removal and colouring (Illumyna Tech Locking Conditioner<sup>5</sup> and Shampoo)
- End stage of:
  - Permanent or demi-permanent oxidative colours (Illumyna Tech Locking Shampoo, Conditioner and Spray)
  - Semi-permanent colouring<sup>6</sup> (Illumyna Tech Locking Shampoo and Spray)
  - Permanent waving (Illumyna Tech Locking Conditioner and Spray)

<sup>1</sup> Filler, mixed with bleaches or before the neutraliser in the permanent waving service

<sup>2</sup> Shampoo, between bleaching/lightening and colouring/toning or after oxidative colouring

<sup>3</sup> Conditioner, after colouring/toning, oxidative colouring or the permanent waving service

<sup>4</sup> Measurement conducted in the laboratory after shaking the two-phase spray

<sup>5</sup> Conditioner before Shampoo is used only in the case of Locking Filler mixed with the bleach

<sup>6</sup> The Direct family must be rinsed thoroughly after being left to act and do not require shampooing after use, particularly the pastel colours. A quick application of Illumyna Tech Locking Shampoo alone is recommended after the most intense colours.

## BLEACHING/COLOUR REMOVAL

### PREPARATION



1

Prepare the mixture of powder or cream using the necessary doses, diluted in the correct ratio, with the developer suitable for the treatment to be performed.

2

Mix the powder/cream and developer.

### CONDITIONING

LOCKING  
CONDITIONER



5 min

7

Apply generous quantities of **Illumyna Tech Locking Conditioner** all over the hair, massaging the scalp gently to distribute the product evenly. Leave to process for at least 5 minutes. **Do not comb the hair during this stage.** Rinse thoroughly.

### TREATMENT

LOCKING  
FILLER



5 Squeezes  
x 10 gr

3

Add **Illumyna Tech Locking Filler**, only after creating the bleach and developer mixture, in the amount of 5 squeezes/ doses (1 ml) for every 10 g of powder or cream.

4

Mix the bleaching cream and **Illumyna Tech Locking Filler** well to obtain a smooth, creamy mixture.

### ENDING

LOCKING  
SHAMPOO



5 min

8

Apply generous quantities of **Illumyna Tech Locking Shampoo** all over the hair, massage the hair and scalp gently to obtain a soft lather, and leave to process for at least 5 minutes. Then, rinse well.

5

Use the product immediately for the service required, as usual.

6

Keep a constant eye on the lightening process. Once the task is complete, rinse the bleach gently and thoroughly from the hair and gently remove excess water with a towel.

### RINSING



### AFTER

At this point, the hair will be ready for colouring with permanent or demi-permanent oxidative colours, or with a semi-permanent colour.

# PERMANENT WAVING

## PREPARATION

PURE GOMMAGE



5 min

1

Prepare the hair with **Pure Gommage** for an anti-residue cleanse, to remove any impurities which could interfere with the service. This stage is more concerned with the hair than with the scalp; so, after a brief massage for total distribution, concentrate mainly on the midshafts and ends, gently massaging and lathering the product. Leave to process for 5 minutes. Rinse well. Towel-dry the hair.

## PREPARATION

SMART PRE CARE



5 min

2

Apply **Smart Pre Care** to equalise hair porosity, starting from the midshafts and ends and going as far as necessary.

3

Wrap the hair around the rods or waving implements as usual.

4

Saturate the rods or waving implements with the liquid chosen during the consultation.

5

Once the task is complete, and after checking, rinse the rods at the wash station for 10 minutes. Remove excess water from between the rods with a towel.

6

Prepare a solution of **Illumyna Tech Locking Filler** and water in the ratio of 10 squeezes/ doses (2 ml) of Illumyna Tech Locking Filler + 50 ml of water, and wet the rods one at a time with the help of an applicator bottle. Leave to process for 5 minutes.

## TREATMENT

LOCKING FILLER



10 Squeezes  
x 50 ml Water



5 min

## NEUTRALIZING

NEUTRALIZER



5 min

7

After the 5 minutes, apply the neutraliser using a sponge or saturate the rods with an applicator bottle, and leave to process for another 5 minutes.

8

Gently unwrap the hair from all the rods, without tugging, and apply more neutraliser to the hair without combing or pulling the hair. Leave to process for 5 minutes, then rinse thoroughly and gently towel-dry the hair.

## CONDITIONING

LOCKING CONDITIONER



5 min

9

Apply generous quantities of **Illumyna Tech Locking Conditioner** and leave to process for 5 minutes. After the processing time, detangle the hair using your hands only. Rinse thoroughly and towel-dry.

## ENDING

LOCKING SPRAY



10

Shake the **Illumyna Tech Locking Spray** well and, at the work station, spray evenly all over the hair from a distance of 30-40 cm.

## AFTER

At this point, the hair is ready for cutting or styling and finishing as usual.



**N.B.** For an excellent service, extra protection is always recommended. However, if the hair is healthy and in good condition, it is possible to skip the Illumyna Tech Locking Filler for the technical services and simply proceed with standard services.

## BLEACHING/COLOUR REMOVAL

### PREPARATION



1

Prepare the mixture of powder or cream using the necessary doses, diluted in the correct ratio, with the developer suitable for the treatment to be performed.

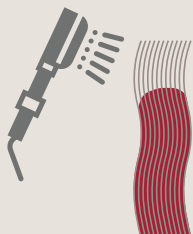
2

Mix the powder/cream and developer.

3

Use the product immediately for the service required, as usual.

### RINSING



4

Keep a constant eye on the lightening process. Once the task is complete, rinse the bleach gently and thoroughly from the hair and remove some of the excess water with a towel.

### ENDING LOCKING SHAMPOO



5 min

5

Apply generous quantities of **Illumyna Tech Locking Shampoo** all over the hair, massage the hair and scalp gently to obtain a soft lather, and leave to process for at least 5 minutes. Then, rinse well.

### AFTER

At this point, the hair will be ready for colouring with permanent or demi-permanent oxidative colours, or with a semi-permanent colour.



# PERMANENT / DEMI-PERMANENT OXIDATIVE COLOURING



1

Carry out the permanent/ demi-permanent oxidative colouring service as usual, or after bleaching/colour removal.



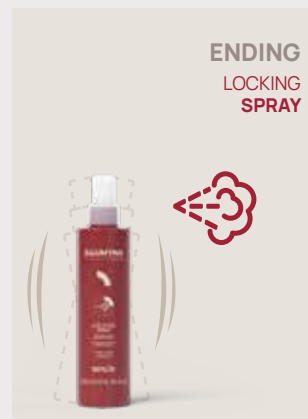
4

Apply generous quantities of **Illumyna Tech Locking Conditioner** and detangle the hair with a wide-tooth comb. Leave to process for 5 minutes. Rinse thoroughly and towel-dry.



2

Once the processing time is complete, massage, emulsify, and rinse well as indicated for your chosen colouring product.



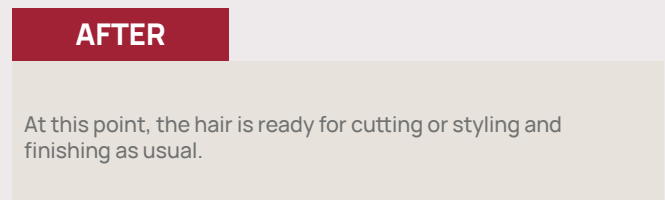
5

Shake the **Illumyna Tech Locking Spray** well and, at the work station, spray evenly all over the hair from a distance of 30-40 cm.



3

Apply **Illumyna Tech Locking Shampoo** and massage the hair and scalp gently to obtain a soft lather, and leave to process for 5 minutes. Then, rinse well.



## SEMI-PERMANENT COLOURING

### COLORATION



1

Carry out the semi-permanent colouring service on pre-lightened hair, or after bleaching/colour removal.

### RINSING



2

Once the processing time has elapsed, rinse thoroughly.

N.B.: The Direct family must be rinsed thoroughly after being left to act and do not require shampooing after use, particularly the pastel colours. A quick application of **Illumyna Tech Locking Shampoo** alone is recommended after the most intense colours.

### WASHING

LOCKING  
SHAMPOO



3

Apply **Illumyna Tech Locking Shampoo** and massage the hair and scalp gently to obtain a soft lather. Then, rinse well.

N.B.: The Direct family contain A.R.C. (Active Revitalizing Complex) as part of their formula, and so do not require the Locking Conditioner after use.

### ENDING

LOCKING  
SPRAY



4

Shake the **Illumyna Tech Locking Spray** well and, at the work station, spray evenly all over the hair from a distance of 30-40 cm.

### AFTER

At this point, the hair is ready for cutting or styling and finishing as usual.



# PROTECTIVE RESTRUCTURING TREATMENT



1

Clean the hair with **Pure Gommage** for an anti-residue cleansing and leave to process for 5 minutes. Rinse well and towel-dry.



3

Leave to process for 5 to 10 minutes. Using a heat source boosts the effectiveness of the treatment.

4

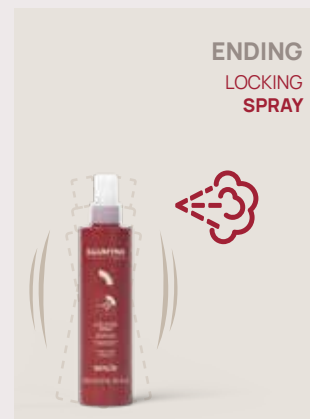
Once the processing time has elapsed, rinse carefully and remove excess water with a towel.



2

Apply a mixture of **Illumyna Tech Locking Filler** and **Illumyna Tech Locking Conditioner** to the midshafts and ends in variable proportions, depending on the hair's level of sensitisation:

- **Non-sensitised hair:**  
mix 10 squeezes/doses (2 ml) of **Illumyna Tech Locking Filler** with 20 ml of **Illumyna Tech Locking Conditioner** and apply to the hair, starting at the ends and going as far up as necessary
- **Medium-sensitised hair:**  
mix 15 squeezes/doses (3 ml) of **Illumyna Tech Locking Filler** with 20 ml of **Illumyna Tech Locking Conditioner** and apply to the hair, starting at the ends and going as far up as necessary
- **Highly sensitised hair:**  
mix 20 squeezes/doses (4 ml) of **Illumyna Tech Locking Filler** with 20 ml of **Illumyna Tech Locking Conditioner** and apply to the hair, starting at the ends and going as far up as necessary



5

Shake the **Illumyna Tech Locking Spray** well and, at the work station, spray evenly all over the hair from a distance of 30-40 cm.

## DOPO

At this point, the hair is ready for cutting or styling and finishing as usual.

ilovesensus.it

 @sensus\_hairlovers

 @sens.ùs



G&P COSMETICS SRL  
via Lorenzo Mascheroni, 27  
20145 - MILANO (MI)  
MADE IN ITALY - ilovesensus.it  
UK RP - Passion4hair Ltd.,  
41 Queen St, CO1 2PQ